



---

SHAHABUDDIN CENTER

GAZIPUR

---



**SHAHABUDDIN CENTER**  
GAZIPUR

*“Pursue your dream with honesty and success will follow with dignity to the end, come live a life of luxury in the heart of a new landmark.”*

*- Mohammed Shahbuddin*





\*\*\*\*\* SKY HOTEL

SKY SHOPPING MALL

SHAHABUDDIN MEDICAL HOSPITAL

SHAHABUDDIN MEDICAL HOSPITAL

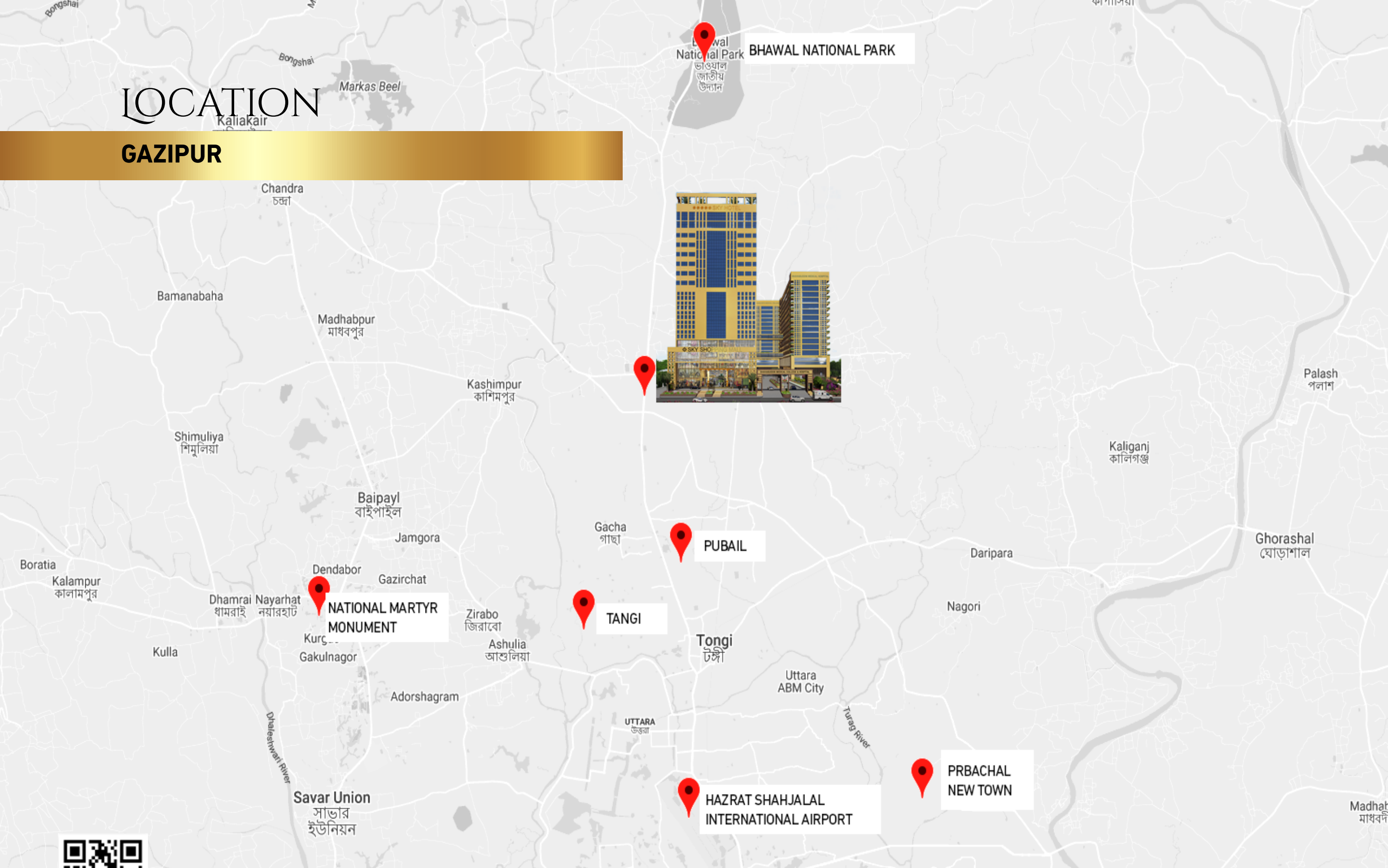
SHAHABUDDIN MEDICAL COLLEGE & HOSPITAL

S  
SKY HOTEL



# LOCATION

## GAZIPUR



Please scan for google Map



# PROJECTED BUSINESS HUB

## GAZIPUR

Gazipur is the rapidly expanding city in Bangladesh, near Dhaka. This is an exclusive commercial hub comprised of fresh air and free of spoiled environment than other areas. Why rushing back to the tedium place? While you are getting the opportunity to explore the quality shopping and live in place amalgamated with all necessities and commodities you need to organize your lifestyle and business at the same time.

Unlike other cities, Gazipur has its unique vibe also the place with rich greenery, grassy to sit and spend quality time with friends and family. The prime attractions of this city are Nuhash Polli, Bangabandhu Safari Park (one of the largest parks in South Asia), Bhawal National Park. These are the mentionable tourist attraction because it has very good amenities and recreational facilities owning vast natural treasures. Apart from tourist places and park, the place is also surrounded by standard academic institutions, hospital, mosque and other facilities. It is worth mentioning that, Gazipur bears prominent routes, as well as convenient transportation facility, allow you to travel inside and outside the city shortly.

Predicting future alterations, Fahad Builders introduced Sky Shopping Mall and Residence as one of the distinctive attractions in the heart of this city to add more value nationally. The premise is the perfect composition for such a place to fulfill requirements by containing a variety of activities and services. For quality living experience and premium shopping experience we are committed to welcome every customer to this environment which is designed to liberate and aspire to a better future. We included a constellation of the highest international brands to provide all the requirements and needs modern shoppers and for the Bon vivant.







**BIRDS EYE VIEW**



# SHAHABUDDIN CENTER

## A PLACE FOR SHOPPING AND LEISURE

Shahabuddin Center name of a diversified lifestyle is one of the largest as well as the first of its kind situated in Gazipur, a constant evolving location in Bangladesh. Amidst all the shopping malls of this country, Fahad Builders has successfully comprehended all the needs and catalyzed into a focal point for fine dining, upscale shopping, and entertainment. With an unparalleled international shopping and living experience, the premise is segmented according to your needs as well as accommodated with 2 floors parking space with maximum security. From the ground floor to the fourth floor, you will find all the necessities to take your lifestyle a step ahead. To rejoice the shopping experience further, child gaming zone, food court and well decorated modern Cineplex available from fifth to the seventh floor.

Sky Residence amalgamated with luxury and greenery making it a place to embrace the true joy of living. Residence balcony enjoys a panoramic view and fresh air in the new-born urbanized city. To escape from the contaminated environment and all the harsh hassle in your life, this is the best choice to stay in a peaceful dimension.

We understand that staying at a hotel in such a place near Dhaka and other tourist spots is the most convenient option for the travellers. Keeping in mind, we are pleased to offer adequate hotel service to our international and domestic visitors. From classic to deluxe suite you can choose according to your need. The hotel is designed with a fully-equipped gymnasium, swimming pool with a live juice bar and well-furnished convention hall to commemorate any special event and practice diversified culture within once place/under the same roof.

You may be wondering for a chance to invest in this multi-dimensional project. We will be pleased to welcome any foreign franchise to invest in the luxurious project and fill our hearts with your presence.

It is not far from where you are! Just get in and enjoy the true shopping experience and luxurious living for as long as you want!



# FAHAD BUILDERS

## FROM CONCEPT TO CREATION

Fahad Builders is one of the significant companies has introduced the vibrant architectural renaissance in 1996, through unique philosophical implementation in design focusing on crafting optimum and aesthetic design to make the construction appealing from different dimensions of the housing structure.

Our architectural maneuver reflects the aspirations of wide trends and styles, contemporary architecture through existing projects such as Sky Shopping Mall & Residence, Shahabuddin Medical College, Shahabuddin Medical Center, Hotel Sweet Dreams, and others. We strive to comprise aura of the artistic bloom in every structure we create because geometries, WE LOVE IT! Our architectural maestro from BUET endeavors to grant the client's imagination into reality also pacing up with design evolution by proposing outstanding blueprint.

The recent born urbanized city has already witnessed some of our construction where we brought the society out from the monotonous environment and structures.





# MOHAMMED SHAHABUDDIN

## CHAIRMAN

Greetings! We as a diversified group of companies maneuvering with honor and pride in the evolving country, Bangladesh. We strive to hover over every aspect of this society and seeking to accomplish sustainable development of the nation. Every day we are pursuing to go beyond by conducting vivid experience that one can have. The core strategy of our companies is to pace up with the 'desire evolution' of our customers in the best possible way possible. We encourage everyone to participate in this better change

To cherish and celebrate life, we have introduced Sky Shopping Mall and Residence of the Shahabuddin Center the first-ever flagship conglomerated with the best shopping and living experience standing with stunning architecture touch in Gazipur. The premise itself has so much to offer to our valuable visitors. In other words, it is the hub of national and international retail chain covering the wide range of lifestyle and consumer living standards. What influenced us to take such initiative! Well, firstly, we want to create a breathtaking place for visitors around the globe love to come and witness the true contemporary development. Secondly, we want to take potential opportunities to achieve national recognition and go beyond global status.

Finally, I would like to express my gratitude to everyone and invite the local and foreign investors equally to be a part of groundbreaking project.







# SKY SHOPPING MALL



DIN MEDICAL

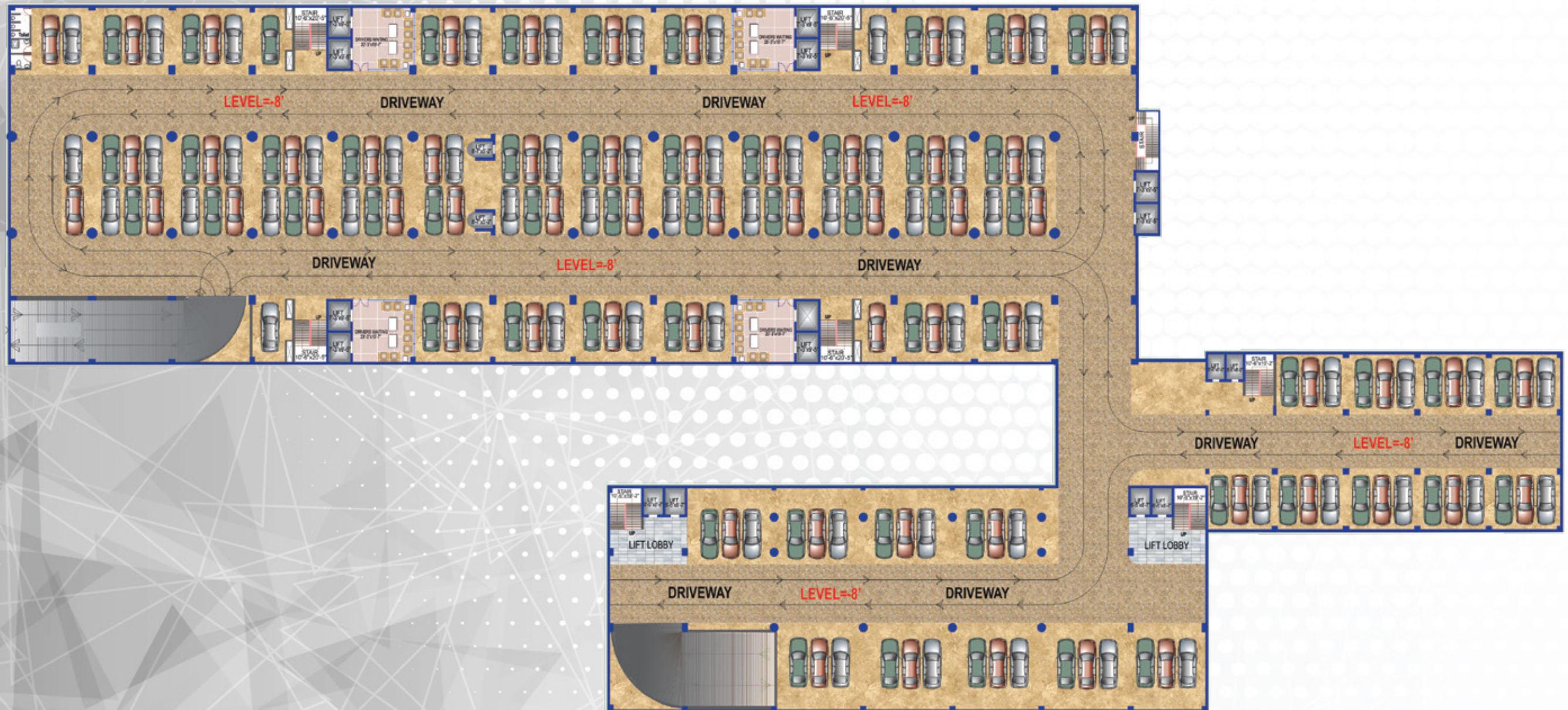
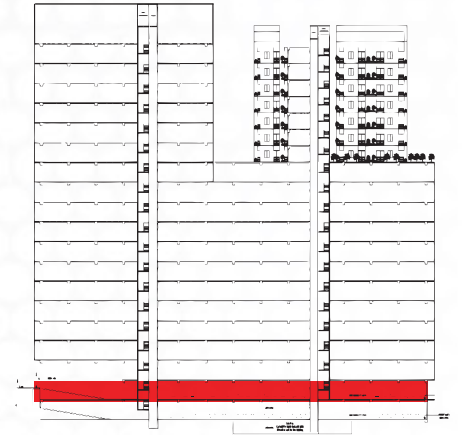
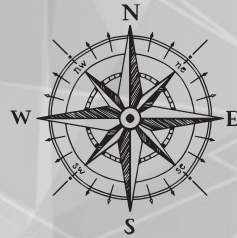
SHOPPING MALL ENTRANCE



# MALL LAYOUT

## BASEMENT

### CAR PARKING

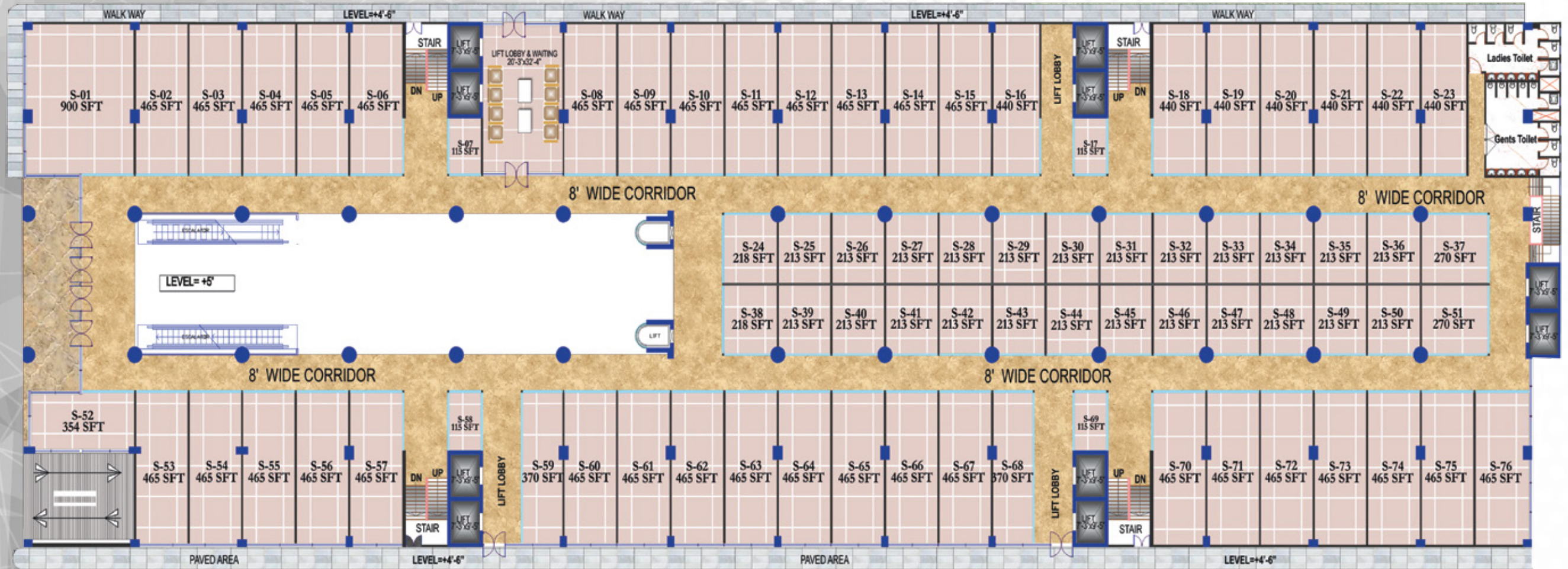
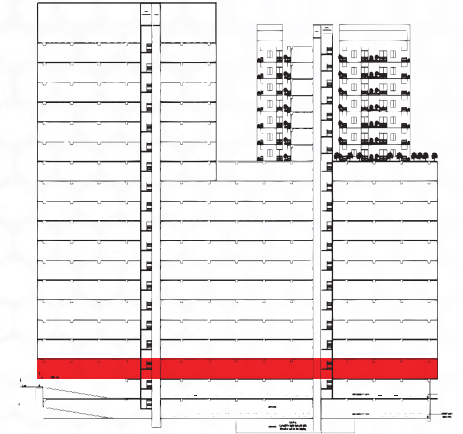




# MALL LAYOUT

## GROUND FLOOR

NATIONAL AND INTERNATIONAL BRANDS  
 BEAUTY AND COSMETICS  
 HYPERMARKET  
 ELECTRICAL MART

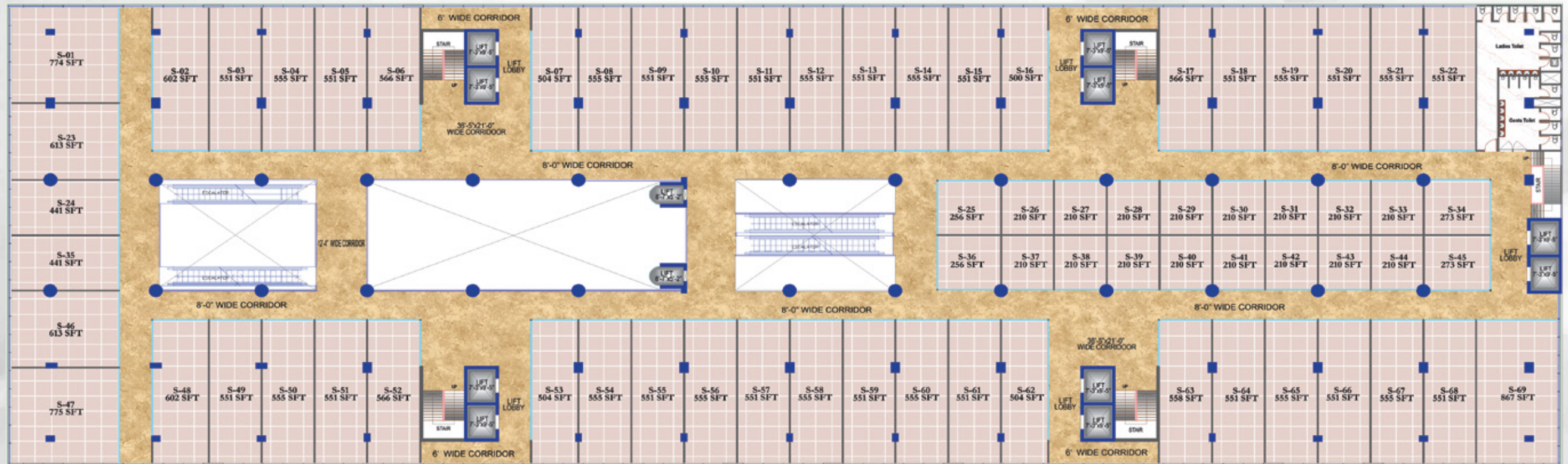
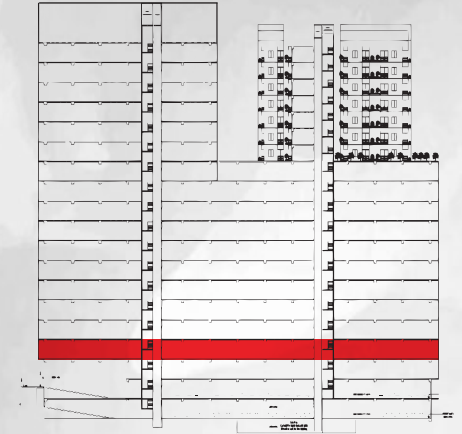




# MALL LAYOUT

## FIRST FLOOR

DIAMOND AND JEWELRY  
FASHION FLOOR  
CLOTHING SHOP  
KIDS CLOTHING







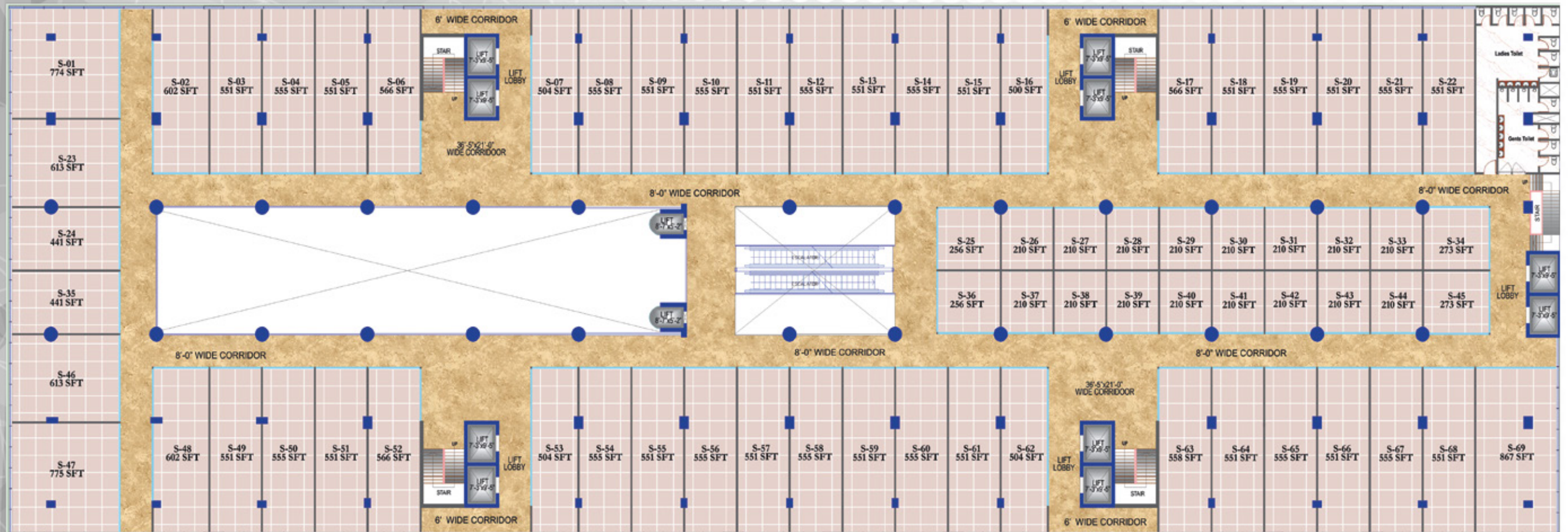
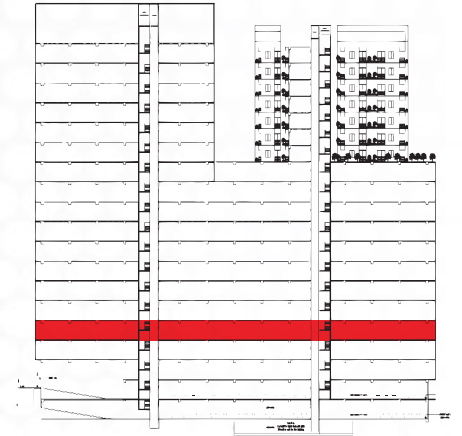
**SKY SHOPPING MALL ATRIUM**



# MALL LAYOUT

## SECOND FLOOR

MEN FASHION  
MEN CLOTHING  
SHOES  
LEATHER ACCESSORIES

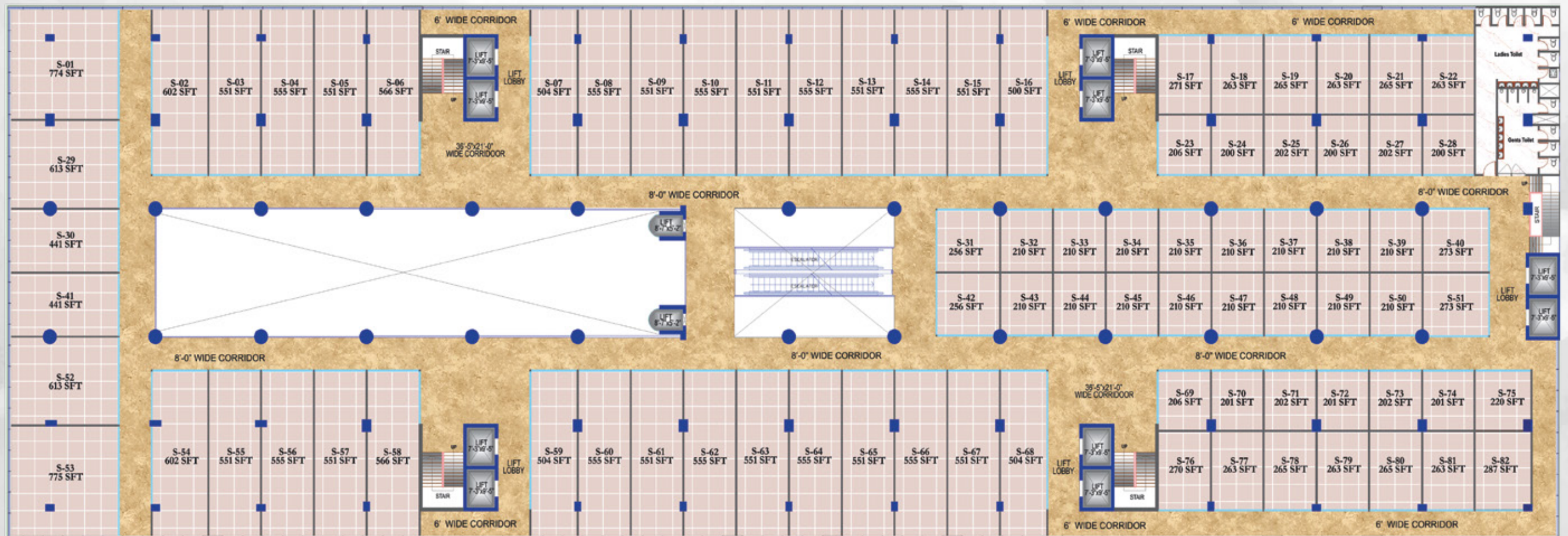
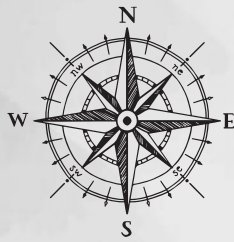




# MALL LAYOUT

## THIRD FLOOR

COMPUTER AND IT PRODUCTS  
ELECTRICS BRANDS  
HOME APPLIANCES

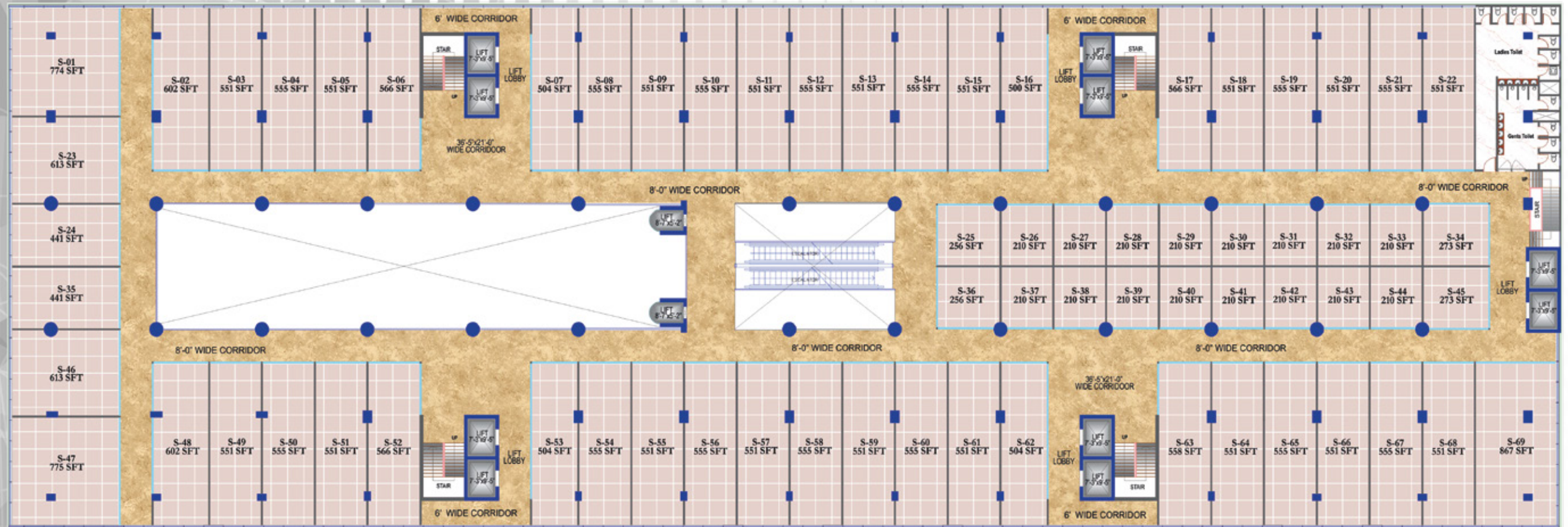
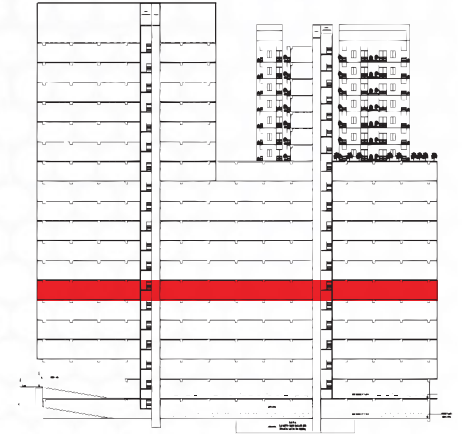




# MALL LAYOUT

## FOURTH FLOOR

MOBILE SHOP  
BOOK SHOP  
MUSIC INSTRUMENT  
HOME FURNITURE

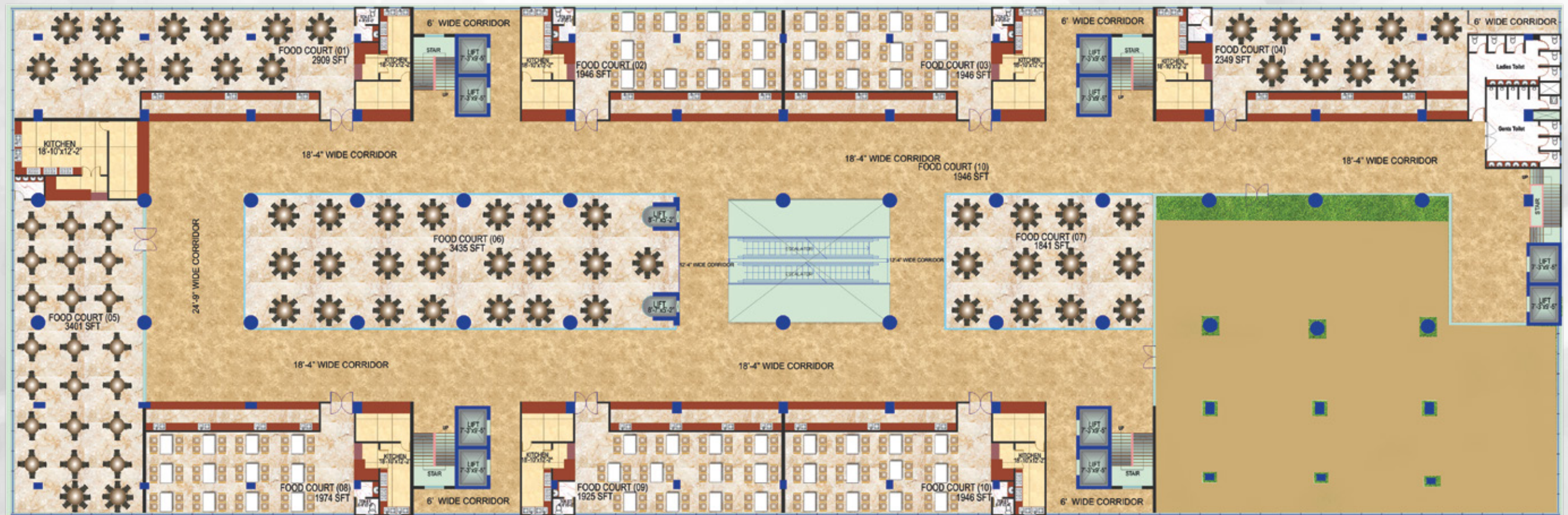
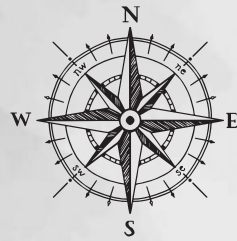
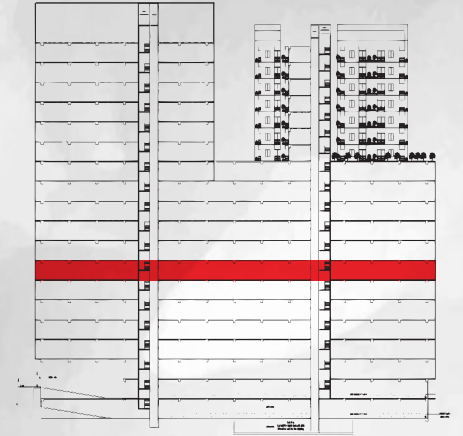




# MALL LAYOUT

## FIFTH FLOOR

GAMES ARCADE  
TOY SHOP  
FOOD COURT  
KIDS PLAY ZONE







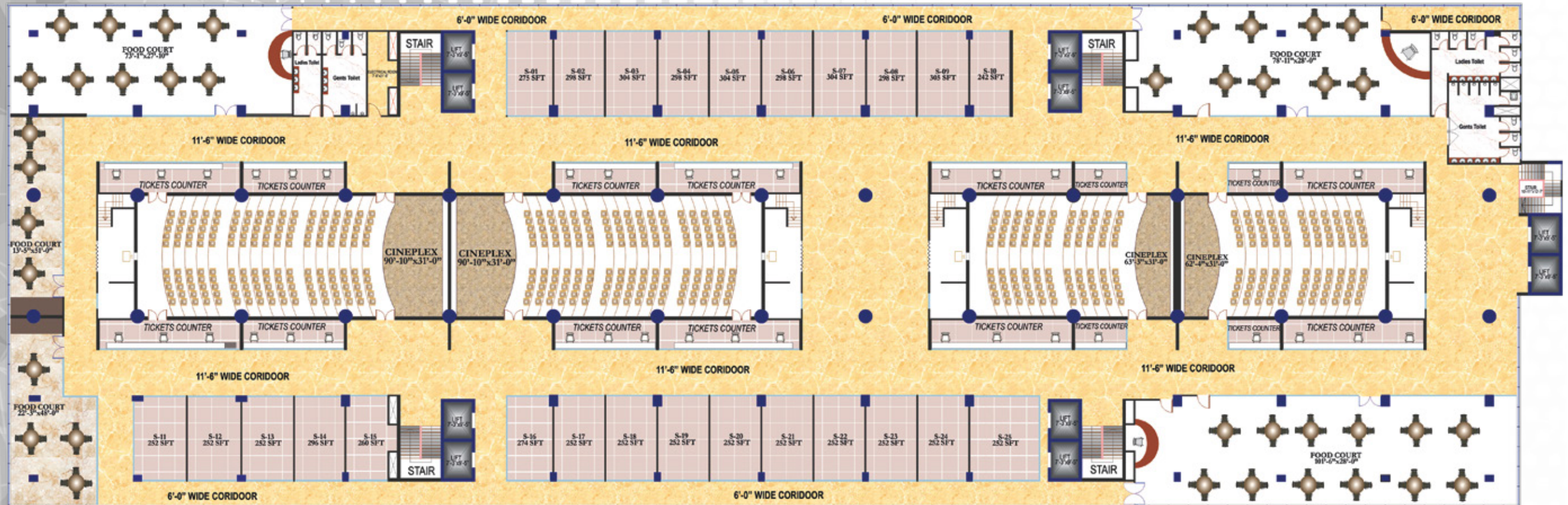
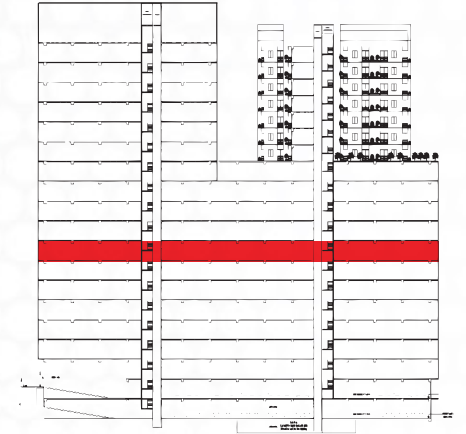
**FOOD COURT**



# MALL LAYOUT

## SIXTH FLOOR

CINEMA COMPLEX  
FOOD COURT







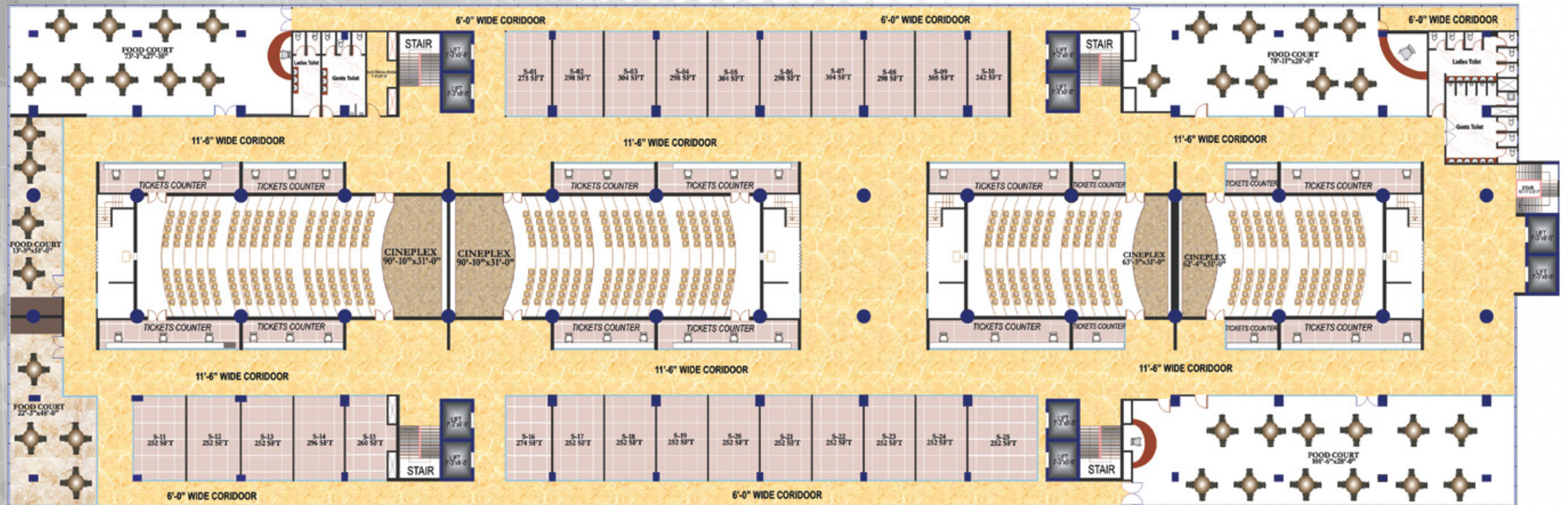
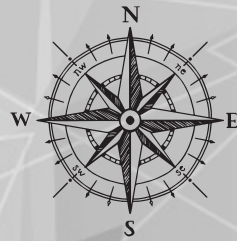
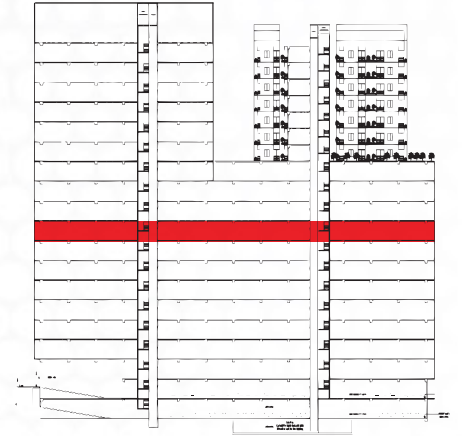
**CINEMA THEATER**



# MALL LAYOUT

## SEVENTH FLOOR

SWIMMING POOL  
GYMNASIUM  
INDOOR GAMES AND SPORTS





# FEATURE AND AMENITIES

## SHOPPING MALL

### **BUILDING ENTRANCE**

The premise entrance is designed with the lavish atmosphere you will instantly feel the buzzing around you. The lobby itself decorated in such a way that the visitor feels warmth welcome in the future fusion of shopping experience and luxury living standard. It is secured with maximum security protocol and uninterrupted safety control.

### **RECEPTION LOBBY**

The reception is also one of the prominent parts of the premises with the intention to provide our valuable visitors with world-class service. The desk is also a true reflection of aesthetic design. Artwork in the guest waiting room will make you discover the meaning of color while you are waiting to enter your home.

### **LIFT, STAIRCASE**

17 lifts with a capacity of 10 persons from the reputed international manufacturer with VVVF (Variable Voltage Variable Frequency) drive system. There is adequate lighting and decorated with well-finished and attractive door and cabin. Spacious tiles lift lobby on each floor. Tiles in the main staircase with easy to climb steps and adequate lighting. Fire protection feature is one of the prominent concerns of our safety issue.

### **THE GENERATOR WILL SERVE THE FOLLOWING**

Lift, water pump, Lighting in common space and stairs. Lighting point and fan point in the master bedroom, dining room and one light point in the kitchen.

### **PARKING**

Two storied parking spot with the capacity of maximum one thousand car parking as per RAJUK rules. Spacious and comfortable internal driveway. Driver's waiting room with a toilet.

### **SUBSTATION**

A sub-station will be made on the ground floor with required KVA ( kilo-volt-ampere). Substation equipment:  
Transformer-rating as per requirement. The component should be imported.  
HT switchgear  
LT switchgear  
Power factor improvement plant  
Drop out fuse, Lighting arrestor heat shrink.

### **GENERATOR**

Residential diesel generator with the engine from European origin for operation in case of power failure. Engine-Perkins/John Deere or equivalent.  
Alternator-New age Stamford/Leroy Somers or equivalent. Rating as per calculated requirement. Capacity as per requirements





---

# SKY HOTEL

Share a Grand Experience









**ENTRANCE MONUMENT**





S  
SKY HOTEL

**HOTEL ENTRANCE**



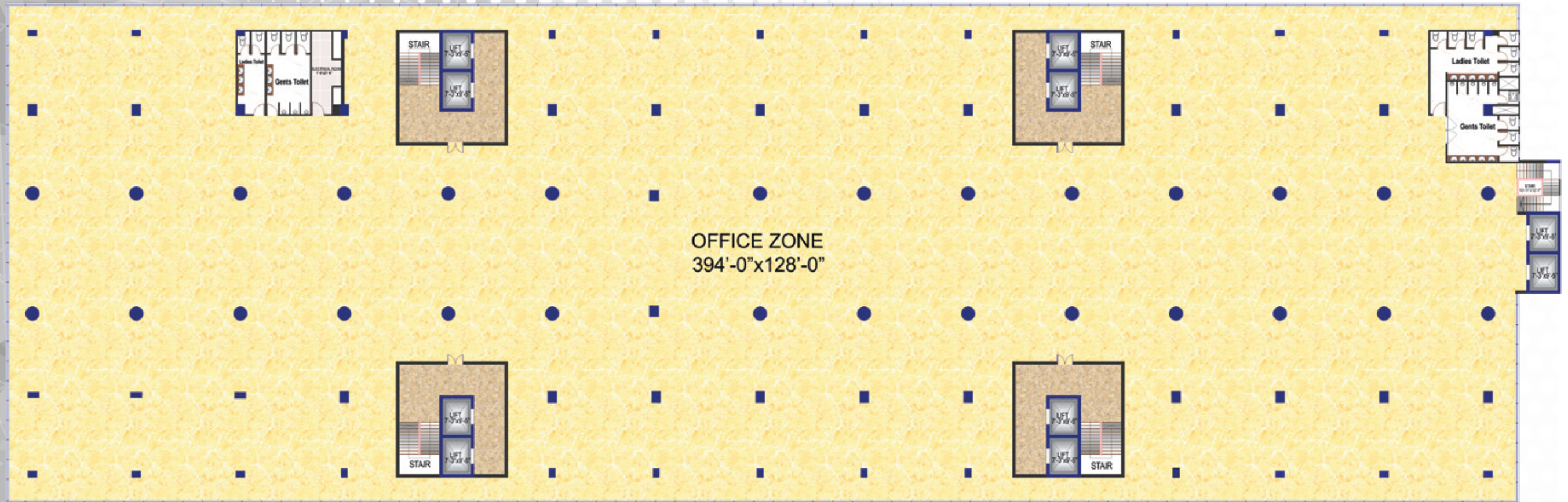
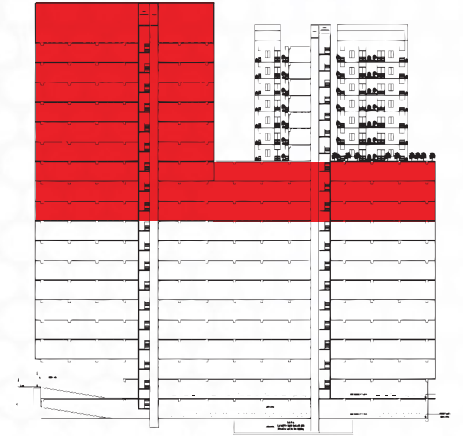


**SKY HOTEL LOBBY**



# HOTEL LAYOUT

## EIGHTH TO SEVENTEENTH FLOOR







**DELUXE SUITE**





**EXECUTIVE SUITE**





**BANQUET HALL**





**CONFERENCE ROOM**



# FEATURE AND AMENITIES

HOTEL

## **COFFEE SHOP**

Coffee bar in Sky Hotel is determined to become a daily necessity for local and tourist coffee addicts, a place to dream of as you try to escape the daily stresses of life and just a comfortable luxurious place to meet your friends or to read a book, all in one. With the growing demand for high-quality gourmet coffee and great service, this coffee Culture will offer its customers the best prepared coffee for 24/7 in the locality that will be complimented with pastries, as well as books that its patrons can read to enjoy their visit.

## **FINE DINE & RESTAURANT**

Two international Restaurant in Sky Hotel what may very well be the most beautiful dining room in Gazipur, the tastes of the five different cuisines; wide range of delicious dessert that simply taste awesome in any season and mood of mind. These restaurants bring lucky guests on a tour of his cellar, where favorite wines have been singled out for multi-sensory treatments. These simply gorgeous restaurants offer food that speaks with your palate.

## **BUFFET RESTAURANT**

Buffet restaurant at Sky Hotel offers lavish breakfast, lunch and dinner as well as an a la carte menu. Start your day right by enjoying an extensive breakfast buffet which includes a vast selection of juices, cereals with condiments, bread, pastries, local specialties such as hummus, fowl and falafel. With a live egg cooking station, not to mention an amazing great selection of Movenpick jams. The international lunch and dinner buffets are laid with a fantastic range of hot and cold cuisine from across the world, as well as tempting sweet treats for all members of the family.



# FEATURE AND AMENITIES

**HOTEL**

## **CONCIERGE SERVICE DESK**

Concierge service desk to attain any demand and emergency. Explore all that Sky Hotel has to offer with the help of our travel experts at the Hotel Concierge Desk. In addition to the outdoor adventures right here at Shahabuddin center, Concierge connects our guests with adventures and activities for all interests and ages all year-round. Whether you already have an idea of what interests your group, or would like ideas to help plan out the rest of your itinerary, you can do it all with the help of our Concierge team.

## **BANQUET HALL**

The festivities begin the moment you choose Sky Hotel- Banquet Hall for your event. Sky Hotel administration and staff are proud to welcome you to the Gazipur finest banquet hall and party facility with a seating capacity of more than 2000 guests at a time. We offer a full array of state of the art audio, visual and lighting equipment that will exceed all your expectations! The spacious and luxurious Mediterranean interior design of the room will make your event unforgettable.

## **AIRLINE CABIN CREW LOUNGE**

Flight attendants don't spend all their time on planes. When they're not flying, they may be hanging out in their crew lounge inside the airport. Sky Hotel is not far away from the airport for cabin crew to join one of the most lavish rest places within city outskirts. It contains Wi-Fi & Power Outlets, Clean Restrooms with Lots of Privacy, Showers, Complimentary Food & Drink, Expert Airline Agents, Being able to set things down & leave a suitcase behind as well as many more additional benefits that are only available here.



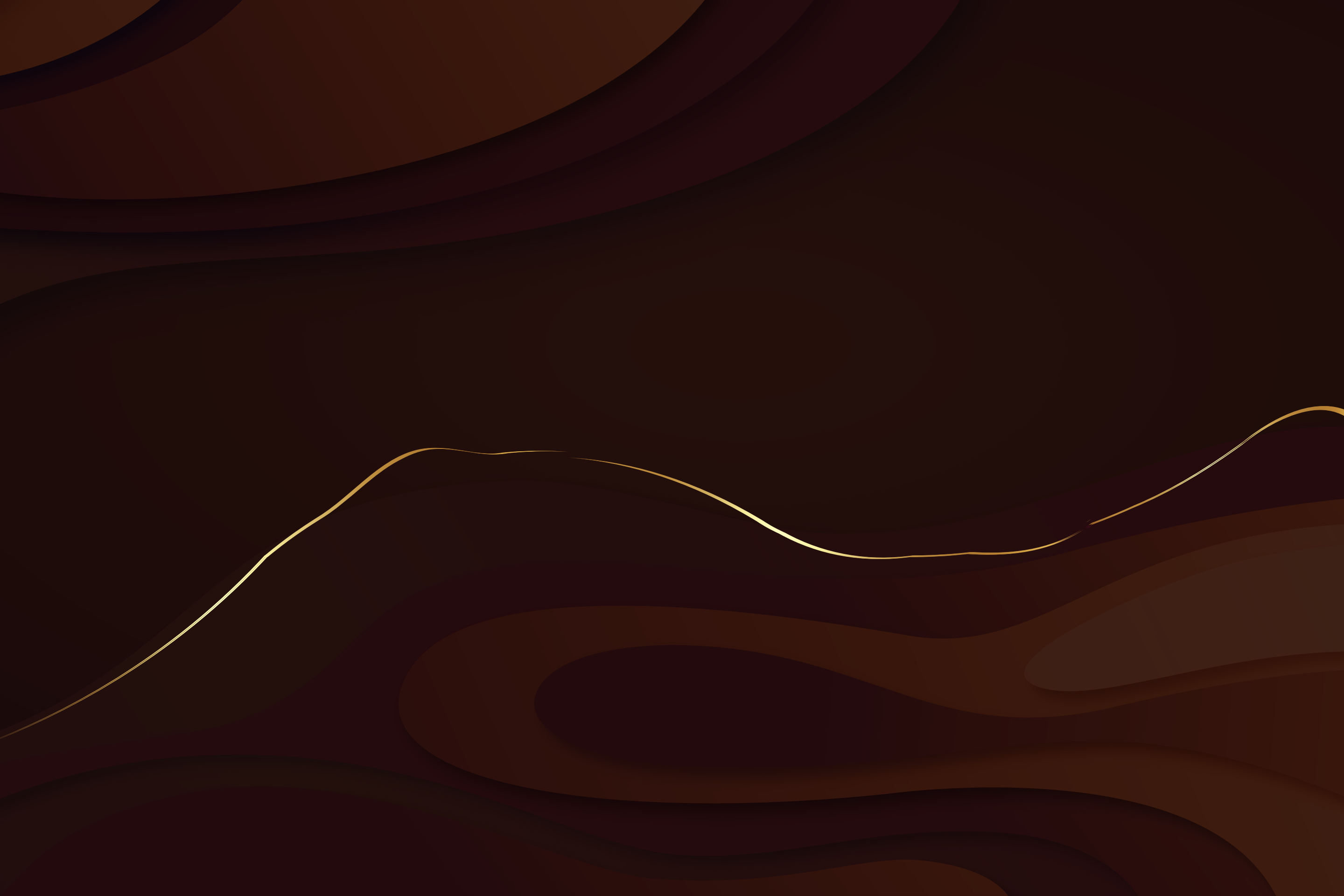


---

# SKY RESIDENCE

Iconic Sky Residence Living.

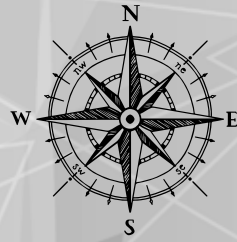






# RESIDENCE LAYOUT

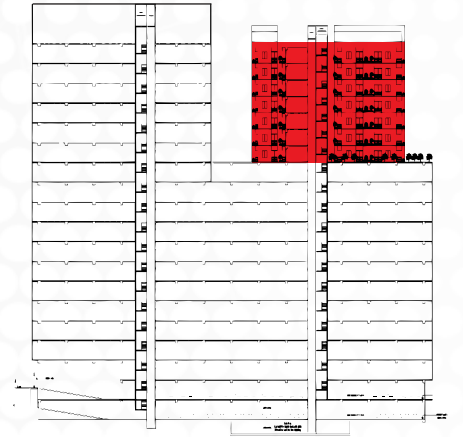
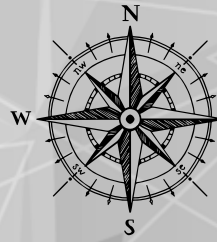
## TYPICAL FLOOR PLAN





# RESIDENCE LAYOUT

## ELEVENTH TO SEVENTEENTH FLOOR

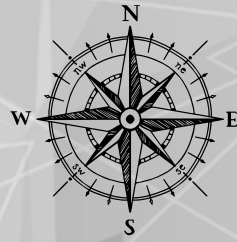
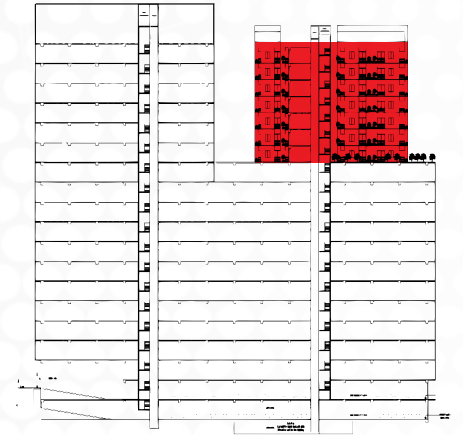


**UNIT TYPE A 1443 SFT**



# RESIDENCE LAYOUT

## ELEVENTH TO SEVENTEENTH FLOOR



**UNIT TYPE B 1454 SFT**





**ELEVATOR**





**MASTER BEDROOM**





**LIVING SPACE**





**SWIMMING POOL**



# FEATURE AND AMENITIES

**RESIDENCE**

## **APARTMENT LAYOUT**

All apartments will be well planned to meet the needs of the residents and to provide the convenience desired in a high quality apartment. Light and ventilation will be emphasised throughout the design

## **MAIN APARTMENT FEATURES | FLOORS & WALL**

Floors will be homogeneous tiles as per selected by PDL.  
All brick wall will be 5" brick works.

## **WOODWORK**

One solid Gamri/Mahogany/imported decorative main entrance door with door chain check viewer, solid brass door knocker.  
Strong and durable Gamri or equivalent veneer flush door/imported veneer flush door shutters with French polish will be used for internal doors except kitchen, Toilet. Moulding on all door frames of Mahogany or equivalent wood. Mortise lock on all doors except maid's quarter which will tower bolt and handle.

## **ALUMINIUM WORK**

Sliding aluminium frame windows as per architectural drawing.  
5mm thick tinted glass mohair lining.  
Rain water barrier in 4" aluminium section.  
Provision for Fly proof netting on windows.  
Safety grills on windows.

## **POINTING POLISHING**

Smooth finish plastic paint on walls and ceiling in soft colors.  
French polished internal door frames and shutters. Bathroom Features.

Floors : Good quality floor tiles in all bathroom as per selected by FBL.  
Walls : Good quality wall tiles in all bathroom as per selected by FBL.  
Doors : PVC doors.

## **KITCHEN FEATURES**

Floors : Homogeneous floor tiles kitchen as per selected by FBL.  
Wall : All walls of the kitchen will be field up to 7' height as per selected by FBL.  
Doors : One side laminated flush door.  
Concrete shelf at 2.5' height from the floor level with tiles work top.  
Double burner gas outlet over concrete platform to support burners.  
One high polish counter-top stainless steel single tray sink.  
Tiled down wash area in the kitchen for washing pots and pans.  
Suitably located exhaust fan.

## **OTHER FEATURES**

Provision for hot and cold water line in master bathrooms.  
Separate plug point for gezeer.





\*\*\*\*\* SKY HOTEL

SKY SHOPPING MALL

SHAHABUDDIN MEDICAL HOSPITAL

SHAHABUDDIN MEDICAL COLLEGE & HOSPITAL

Lapag-Hloyd



# R A J U K A P P R O V E D P R O J E C T

---

Shopping mall up to 8th floor

---

400 retail shops

---

300 parking capacity

---

Hyper market

---

Cineplex

---

---

5-star hotel 9th to 17th floor

---

Luxury residence

---

24/7 security surveillance

---

10 passenger / cargo lift

---

4 fire exits

---

Sales : 0194888891, 0194888892, 0194888893, 0194888894

**CORPORATE & SALES OFFICE**

House #13, 1st floor, Road #113/A, Gulshan 2, Dhaka 1212; Tel: 9859961, 9859971

**PROJECT SITE OFFICE**

Holdings # 273, Block # C, Bhogra, Gazipur

[www.skymall-bd.com](http://www.skymall-bd.com)